



SANCTUARY
CHobe CHILWERO

CHobe NATIONAL PARK



BOTSWANA 15 SUITES

Sanctuary Chobe Chilwero is a luxurious riverside retreat in the heart of the bush on the edge of Chobe National Park, home to the world's largest remaining population of elephants.



LUXURY, NATURALLY

Adventure, enchantment and 'Luxury, naturally' - all delivered with a quiet, understated charm and understanding of place – is the guiding philosophy of Sanctuary Retreats and our award winning luxury safari lodge, Sanctuary Chobe Chilwero.

Sanctuary Chobe Chilwero is a luxurious retreat in the heart of the bush, located on the edge of Chobe National Park, the second largest national park in Botswana, where some 80,000 elephants roam. From the lodge's hilltop position, guests can enjoy far reaching panoramic views over the Chobe River and floodplain below. The main public area includes a lounge, library and dining room, which are linked to outdoor viewing patios.

Guests are able to relax in the split-level swimming pool or unwind with a pampering session in the full service spa complete with a treetop treatment room.

HIGHLIGHTS

- Highest concentration of elephants in Africa on the lodge's doorstep
- Air-conditioned lodge
- Full service spa, including treetop treatment room
- Sundowner cruises on the Chobe River in our customised boats
- Three family suites featuring an extra bedroom
- Families with children of all ages welcome

ACCOMMODATION AND FACILITIES

Sanctuary Chobe Chilwero's fifteen suites all command fabulous views and come with every convenience guests could hope for. The main areas look out over the Chobe River which borders Chobe National Park to the north. Guests can relax in the split-level split-level swimming pool, unwind with a pampering session in the spa or enjoy the gourmet food.

Each Suite offers a free standing bath tub and an indoor shower. The rooms are also equipped with air-conditioning, hairdryer, ceiling fan, in-room safe, mosquito nets and mini bar. Complimentary WiFi is available in all of the rooms of the lodge. Three of the suites are Family Suites, offering an extra bedroom for families.

The romantic Pool Suite features a private plunge pool, a private deck where guests will be able to enjoy private dinners for two under the stars (weather permitting) and special turn downs every night. The lodge also features a Bush Boutique. Electricity supply is a combination of silent packed generator and battery system.

LOCATION AND GETTING THERE

Sanctuary Chobe Chilwero borders the Chobe National Park.

The lodge is accessible by road and air. The nearest airport is Kasane Airport which is approximately 10 minutes from the lodge.

Flying times:

- Maun to Kasane - 1 hour 30 minutes
- Chief's airstrip to Kasane - 1 hour 30 minutes
- Stanley's / Baines' airstrip to Kasane - 1 hour 40 minutes
- Livingstone Airport to Kasane Airport – 30 minutes
- Livingstone to Chobe Chilwero road transfer via Kazangula - 1 hours and 30 minutes

All inter-camp flights are provided by Mack Air. Maximum of 20kg of luggage per person is allowed for light aircraft flights, including hand luggage and camera equipment. Maximum luggage dimensions are 30cm x 35cm x 70cm.



GAME VIEWING AND ACTIVITIES

Game drives

Chobe National Park, renowned for its elephants is home to the largest concentration of these gentle giants in Africa. The park also features an abundance of sable and roan antelopes. The lush riverfront region is home to giraffe, wild dog, lion, sable and Cape buffalo and is the only place in Botswana where Puku antelope can be spotted. In the savannah, zebra, wildebeest, warthog, impala and kudu are plentiful. Key wildlife include: elephant, buffalo, lion, leopard, giraffe, impala, waterbuck, zebra, and hyena. Our highly qualified professional guides lead thrilling morning and afternoon game drives in open-sided 4X4 vehicles in the National Park. Our morning drives include coffee, tea and freshly baked confectionaries while our afternoon game drives include classic sundowner drinks and canapés at specially selected spots.

Sundowner cruise

The best way to end a day of safari here is sipping on a cocktail while watching an African sunset over the still waters of the Chobe River from the comfort of one of our specially designed riverboats. Sundowner cruises are also a great way of seeing buffalo up close as they come out of the shade to graze in the cooler evenings and elephants as they wade in the river.

Photographic Safari Cruise

Our safari boat can seat up to 18 guests and has a lower and upper deck, both featuring 360 degree swivel seats. The upper deck offers a great vantage point of the Chobe River and wildlife while the lower deck boasts a bar area and the perfect spot to relax and enjoy a scrumptious river breakfast or lunch. The boat offers a great exclusive and intimate alternative to enjoying the Chobe area, especially for photographic enthusiasts.

Fishing Excursions

The Chobe River is a great area for fishing which is always on a catch and release basis. The best time for fishing is in winter, May, June, July and August. Guests can expect to catch Bream and Tiger Fish, one of the most sought after game fishing experiences. The use of the boat during this activity is for a maximum of three hours and includes basic fishing equipment. A maximum of three people are allowed per boat and the activity is subject to availability. We suggest booking this activity while at the lodge. (Additional cost)

Tour of Victoria Falls in Zimbabwe

Only an hour and a half's drive from the spectacular Victoria Falls, Sanctuary Chobe Chilwero is a great base from which to explore this great wonder of the world. The transfer time is approximately 1 ½ hours depending on border formalities. From here, the guide will escort guests around the Falls sharing some facts and history along the way. Sanctuary Retreats will supply raincoats during high water months when guests are likely to get wet from the spray of the Falls. The walk is approximately 1½ hours in duration (3km), through the rainforest, stopping at the various viewing points. Guests will also have the opportunity to do some curio shopping in the adjacent open-air markets before returning to Chobe Chilwero. The activity includes the return transfer from Chobe Chilwero to The Falls, entrance Fees to Victoria Falls Rainforest, Guided Tour of The Falls and bottled water. Excluded is a day Entry Visa Fee - Payable at the border upon entry, lunch, any gratuity or items of a personal nature. (Additional cost)

A TYPICAL DAY ON SAFARI

Summer Schedule: September - April

- 05:30 Wakeup call
- 06:00 Breakfast
- 06:30 Option to depart for morning game viewing
- AM Option to enjoy additional activities
- 12:00 Lunch
- PM Option to enjoy additional activities
- 16:30 Option to depart for afternoon game viewing
- 20:30 Dinner

Winter Schedule: May - August

- 06:00 Wakeup call
- 06:30 Breakfast
- 07:00 Depart for morning game viewing
- AM Option to enjoy additional activities
- 11:30 Lunch
- PM Option to enjoy additional activities
- 16:00 Depart for afternoon game viewing
- 20:00 Dinner



HONEYMOONS AND SPECIAL OCCASIONS

Guests celebrating their honeymoon will receive special surprises during their stay. All attempts are made to keep honeymooners separate from other guests.

Our honeymoon services include:

- Sparkling wine and romantic bath in guest rooms
- Private dinner at the pool
- Complimentary 15 minute hand or foot massage
- Private bush sundowners (dependent on vehicle availability)

FAMILIES WITH CHILDREN

We welcome children of all ages at Sanctuary Chobe Chilwero.

Our friendly guides will be able to offer dedicated children's activities. Find water and identify edible plants in the bush. Learn how to make rope out of natural materials.

Children aged 15 years and younger are required to share with an adult. The camp is able to accommodate triples in the family suites. Private vehicle must be booked for children aged 5 years and younger. Housekeepers are able to baby sit children while guests are on an activity.

DINING

Breakfast, lunch, snacks during activities and dinners are all included in your stay. Breakfast is served before the morning game activity. During your morning game viewing activity, coffee, tea and a selection of pastries and biscuits will be served out in the bush. Lunch will be enjoyed back at the camp. Afternoon and evening game drives include classic sundowner cocktails and canapés at specially selected spots before returning to the camp for pre-dinner drinks and dinner. Romantic private dinners on your room deck or by the pool can be arranged upon request. With prior notice, our camps are able to arrange halaal meals, however, please note our kitchens aren't strictly halaal and our chefs are not trained in halaal food preparation. Unfortunately, we are unable to arrange kosher meals.

Meals typically consist of the following:

- **Breakfast:** Continental and full English Breakfast
- **Lunch:** Table d'Hote
- **Dinner:** Table d'Hote, 3 course meal with 2 to 3 choices, one being a vegetarian

CLIMATE

Green season usually begins in late November and lasts through early March. This season has hot sunny days with occasional afternoon thundershowers cooling down the surrounding area. Average daily temperatures range from 20°C-38°C. The dry season runs from late May to early October. In winter (June–August) temperatures can plummet as low as 0°C at night with a daily maximum of around 26°C-28°C.

CLOTHING

Clothing should be cool and comfortable. Greens, browns and khaki coloured clothing are advisable for safaris especially when doing a walking safari. We suggest long sleeves and long trousers and for morning and evenings due to mosquitoes and a fleece jacket as it could be cold early mornings. Sturdy and comfortable shoes are essential. A complimentary overnight laundry service is offered in the camp. Sunscreen, sunglasses and hats are essential. Binoculars and good cameras are an absolute must. The camp provides a torch as well as complimentary mosquito repellent and toiletries.



HEALTH

We advise all travellers to take precautions against malaria and we recommend speaking with your GP or personal physician four to six weeks before departure. Travellers from or through countries which have been declared yellow fever infected areas must provide an international health certificate of vaccination for yellow fever upon arrival into Botswana.

MONEY AND CREDIT CARDS

All extras can be paid for with Visa, MasterCard and traveller's cheques. US dollar, Pound, Euro and Rand are also accepted; however change will be given in the local currency. Diners Card and American Express Cards are not accepted.

TIPPING GUIDELINE

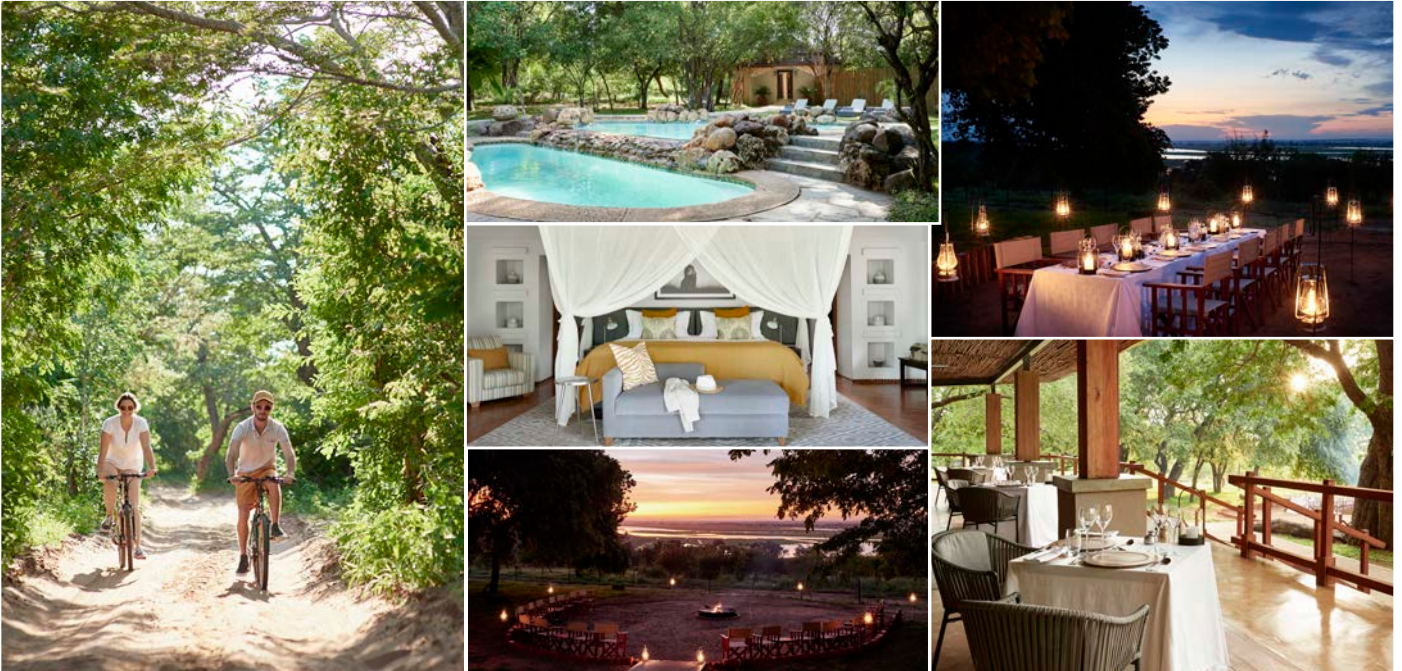
Tipping is not obligatory but generally accepted rates are \$15 per guest per day for the guide and \$15 per guest per day for the rest of the staff.

SPECIAL REQUESTS

Sanctuary Chobe Chilwero prides itself on its personalised services. Please let us know if you have any special requests, interests, dietary requirements, allergies or medical conditions.



SANCTUARY CHOBE CHILWERO



LUXURY, NATURALLY

Sanctuary Retreats was born in Africa with the launch of our first luxury safari camp, Sanctuary Olonana, in Kenya, in 1999. Today, the Sanctuary Retreats portfolio of luxury safari lodges and expedition ships brings a much wider choice of our boutique adventure than ever before – but our standards remain the same. We promise adventure, enchantment and ‘Luxury, naturally’, all delivered with a quiet, understated charm and understanding of place.

RESERVATIONS AND ENQUIRIES

For more information and for your next booking, please contact us:

+ (27) 11 438 4650
reservations.safrica@sanctuaryretreats.com